

Industrial Sliding

MOD. QT

The Mod. QT Industrial Sliding Door is a high-performance solution designed for the most demanding environments.

PIR
FOAM DOOR

MADE IN
EUROPE



AVAILABLE FOR:

- REFRIGERATION
- FREEZING
- DEEP-FREEZING



High resistance, reaching more than 1,000,000 opening and closing cycles.



Ideal for large-sized or overhead access areas.



Applications: food industry, logistics, retail, etc.



Ideal for large doors and intensive uses.



Dimensions can be customised up to 2400 x 3500 mm and 250 kg doors.

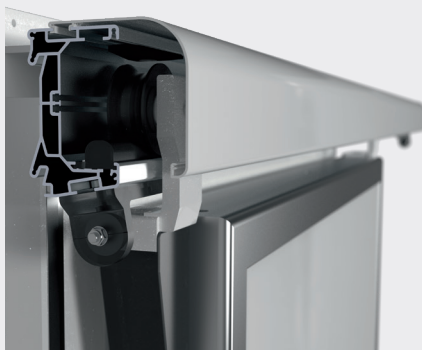


Designed for extreme use.

* For larger dimensions the door will be sent in 2 pieces.

1 Smooth rail design for easy opening

OPTIONAL
Overhead rail system. Split rail.



GUIDING SYSTEM

2 Stainless steel fittings and steel rollers



LEVER

Side lever mechanism for manual operation.



GUIDE

Guide system integrated into the door leaf.



HOOK

Hook mechanism for secure closure.

3 Electric / electronic automation with integrated rail cover (Optional)



4 Lateral guide independent from floor



LEAF

CONSTRUCTION / MATERIALS

- Manufactured with an anodised aluminium structural profile frame with thermal bridge break.

COATING

- Galvanised sheet steel, lacquered with 25 µm polyester paint.
- White RAL 9010.
- Coated with a removable protective film.
- Food safe use.

INSULATION

- High-pressure injected polyisocyanurate (PIR) foam with a density of 40-43 kg/m³.

AIRTIGHTNESS

- Double perimeter sealing strip on PVC support.

THICKNESS

- Refrigeration 100 mm.
- Freezing 100 mm.
- Deep freezing 140 mm.

FRAME

ADAPTABLE DESIGN

- Frame designed for panel and adaptable to various thicknesses (between 60 and 200 mm). Built from lacquered aluminium profiles with thermal bridge break.

RESISTANCE TO SUB-ZERO TEMPERATURES

- For sub-zero environments, it includes a 220 V heating element with the following power:
 - Freezing: 25 W/m
 - Deep-freezing: 40 W/m

FINISHES AND FIXING

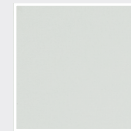
- Aluminium threshold fastened to frame and with 2 mm stainless top-plate.
- Frame fixed to panel by hidden self-tapping screws covered by aluminum profile.

FITTINGS

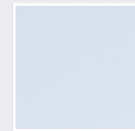
- Stainless steel fittings.
- High-strength metal pulleys for intensive use.
- Anodised aluminium rail with an optimised profile for smooth opening.
- Lateral guidance system fitted to the panel, separate from the floor.

OPTIONS

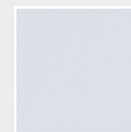
- Other coating finishes.



* LAC 9010



* PVC (S5)



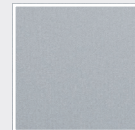
* PET (K5)



* STAINLESS STEEL (I6)



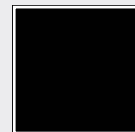
* PVC (C5)



* LAC SILVER (Q5)



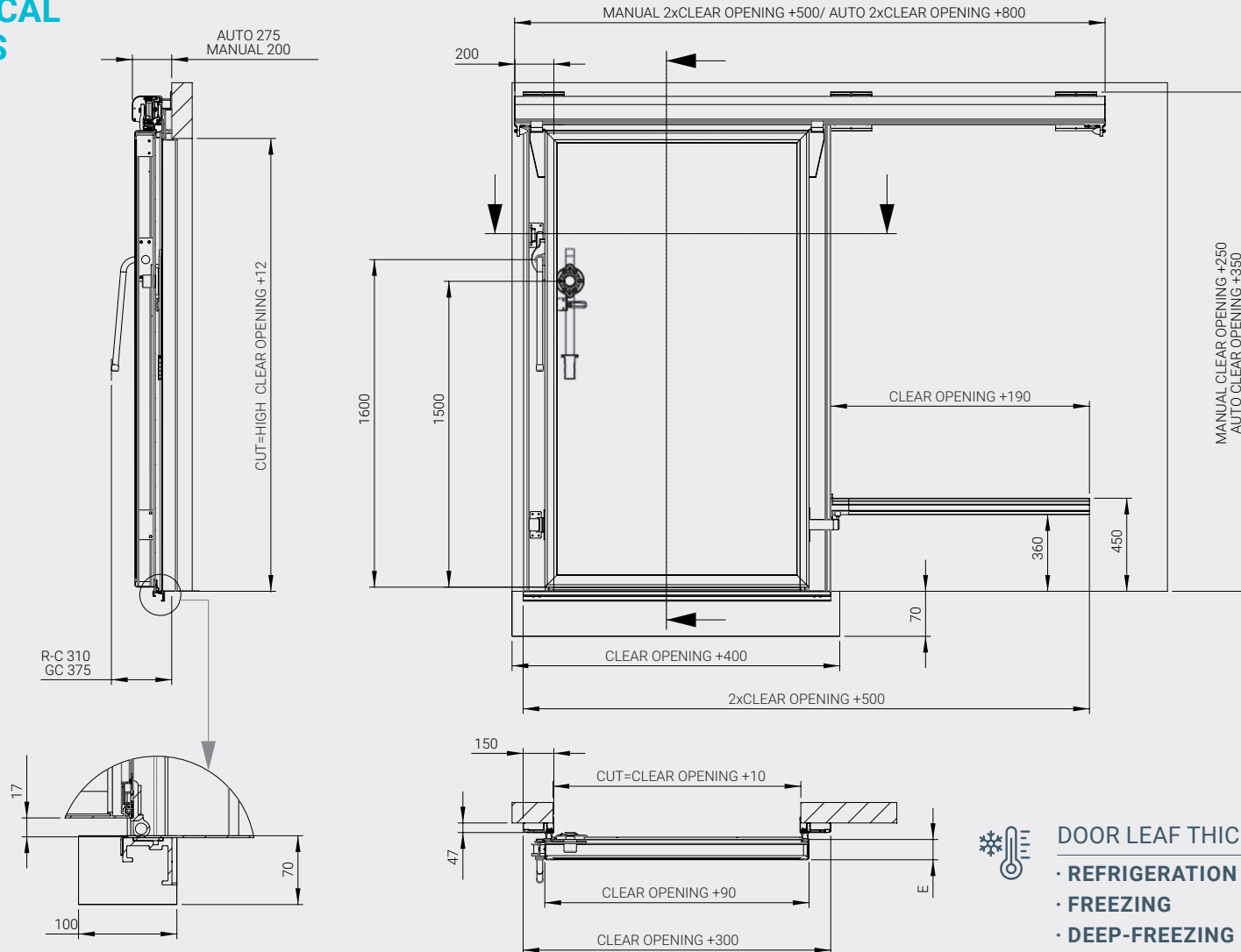
* LAC BLUE (E5)



* LAC BLACK (L5)

- Key lock with internal release.
- Kickplate height 850 mm.
- 250 x 500 mm window for chiller temperatures.
- Split rail up to max. clear opening 1500 x 2500 mm.
- Electrical and electronic automation.

 **TECHNICAL
DETAILS**



DOOR LEAF THICKNESS	E (mm)
• REFRIGERATION	100
• FREEZING	100
• DEEP-FREEZING	140